

WILLOUGHBY PLAT NO. 7

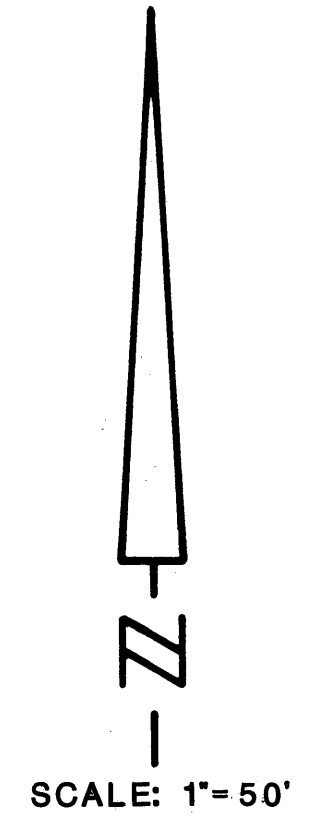
BEING A TRACT OF LAND LYING IN THE HANSON GRANT SITUATED IN MARTIN COUNTY, FLORIDA.

I, MARSHA STILLER, CLERK OF THE CIRCUIT COURT OF MARTIN COUNTY, FLORIDA, HEREBY CERTIFY THAT THIS PLAT WAS FILED FOR RECORD IN PLAT BOOK 12, PAGE 47, MARTIN COUNTY, FLORIDA, PUBLIC RECORDS, THIS DAY OF _____, 1990.

MARSHA STILLER, CLERK
CIRCUIT COURT
MARTIN COUNTY, FLORIDA

BY: _____
DEPUTY CLERK

FILE NO. _____

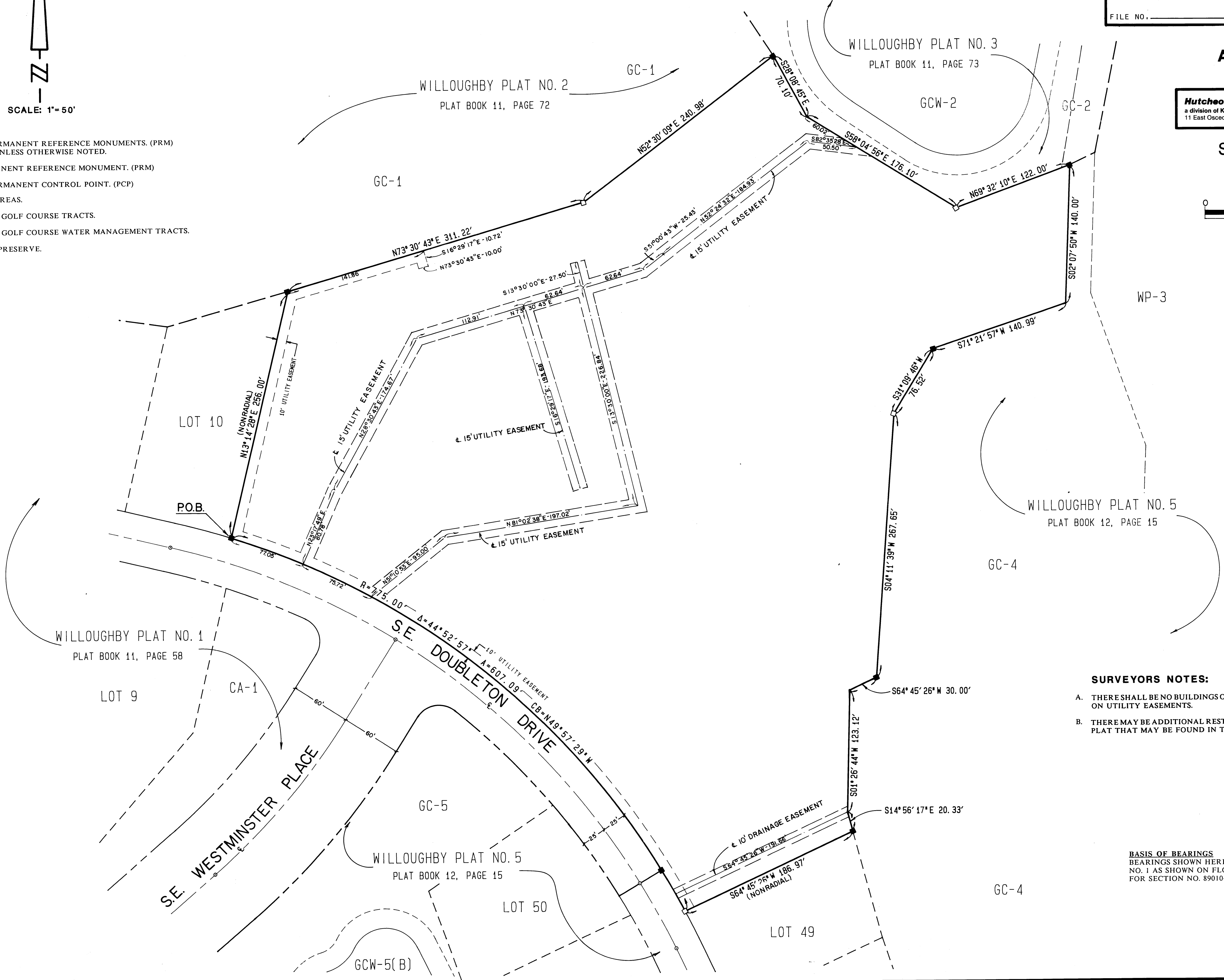
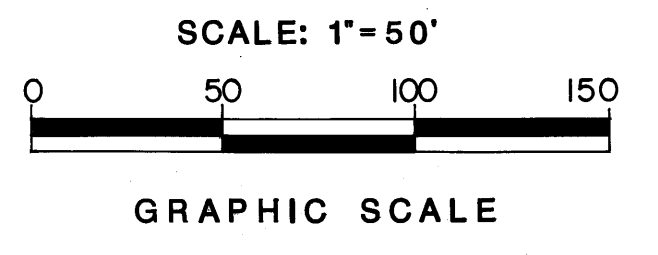


- LEGEND**
- FOUND PERMANENT REFERENCE MONUMENTS. (PRM)
LB #3881 UNLESS OTHERWISE NOTED.
 - SET PERMANENT REFERENCE MONUMENT. (PRM)
 - FOUND PERMANENT CONTROL POINT. (PCP)
 - C.A. COMMON AREAS.
 - G.C. INDICATES GOLF COURSE TRACTS.
 - G.C.W. INDICATES GOLF COURSE WATER MANAGEMENT TRACTS.
 - W.P. WETLAND PRESERVE.

APRIL 1990

Hutcheon Engineers
a division of Kimley-Horn and Associates, Inc.
11 East Osceola Street, Stuart, Florida 34994-2114

SHEET 2 OF 2



- SURVEYORS NOTES:**
- A. THERE SHALL BE NO BUILDINGS OR OTHER PERMANENT STRUCTURES PLACED ON UTILITY EASEMENTS.
 - B. THERE MAY BE ADDITIONAL RESTRICTIONS THAT ARE NOT RECORDED ON THIS PLAT THAT MAY BE FOUND IN THE PUBLIC RECORDS OF THIS COUNTY.

BASIS OF BEARINGS
BEARINGS SHOWN HEREON ARE REFERENCED TO U.S. HIGHWAY NO. 1 AS SHOWN ON FLORIDA D.O.T. RIGHT-OF-WAY MAP FOR SECTION NO. 89010-2114 DATED 8-19-60.